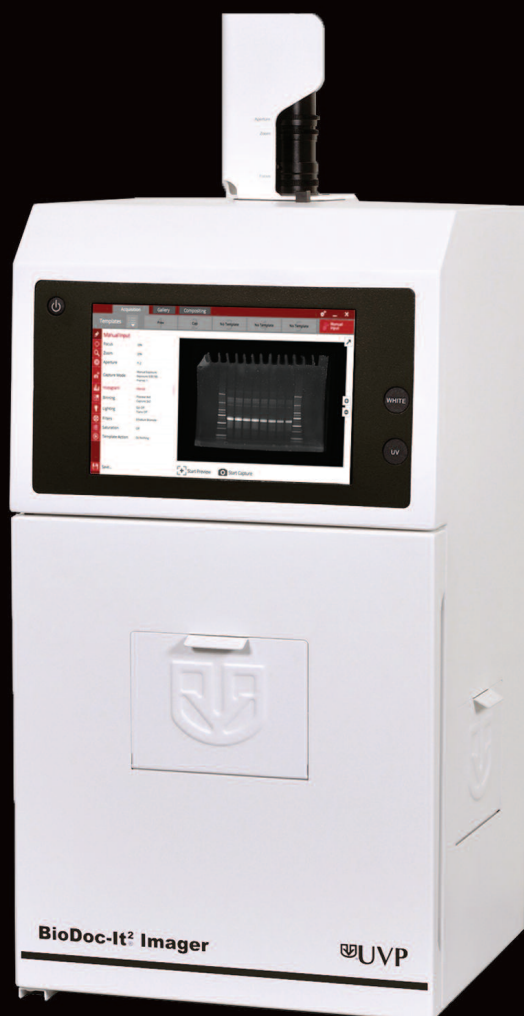


BioDoc-It^{®2} Imaging Systems

- Easy gel documentation with a touch of the screen
- Compact, stand-alone design





BioDoc-It^{®2} Imaging Systems

All-in-One Design for Streamlined Gel Documentation

New design features a higher resolution camera, larger screen size and new software interface! This next generation BioDoc-It² enables researchers to capture publication-quality gel images with the touch of the screen.

- High resolution 5.0 MP **camera**
- **Lens** is easily accessible for adjustment of aperture, zoom and focus
- Two-position filter tray with **Ethidium Bromide filter**; additional filters are available
- Large **10" touch screen** with user-friendly software optimizes image capture
- Easy access **data storage** for saving images on the USB drive, to the system or network computer
- **Unique viewing window** allows UV-safe viewing of gels without opening the door
- **Wide front door**; safety switch turns the UV light off when the door is open
- **Side access doors** for gel repositioning and cutting while viewing the gel on the screen
- **Compact design** maximizes laboratory bench space
- Choice of **UV Transilluminator** - single UV, 2UV or 3UV models

This stand-alone system is excellent as a dedicated image capture station in multiple user or core lab facilities.



BioDoc-It² captures publication-quality gel images with a touch of the screen!

Integrated Capture Software with Touch Screen Simplicity

Easily **preview, capture and save** gel images with a touch of the screen!

- Acquisition tab enables ease of access to fine tune auto and manual image capture modes, histogram and saturation
- Exposure can be adjusted with customizable exposure times
- Save images in TIFF and JPEG formats

One-Touch Templates simplify image capture!

- One-Touch Templates can be utilized to create and save presets with a variety of image capture settings; templates recalled for later use
- Templates ensure consistency and reproducibility of data while saving time when repeating experiments
- The top-five, user-defined templates are accessed via buttons across the top of the screen; unlimited number of templates can be saved to the drop-down menu

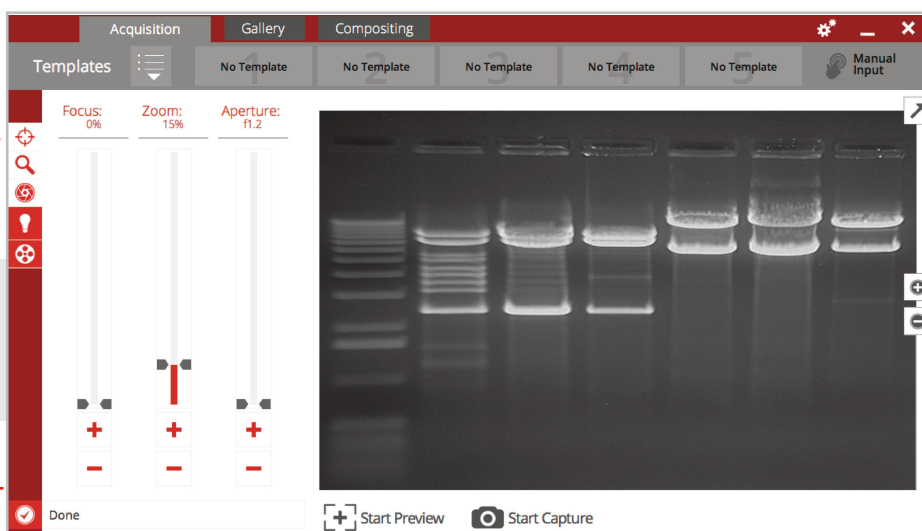
Templates with saved settings automate routine, repeat experiments

Manual capture mode designed for fine tuning image capture settings

Select language preference options

Choose from English (standard), Chinese (simplified), Turkish, Japanese, Spanish, Korean, Russian, Portuguese and German

Preview, capture and save gel images with easy access controls



BioDoc-It² Applications



DNA Gels



Blue Light Gels



Protein Gels

The BioDoc-It² is designed for imaging of stained gels that are illuminated on the UV transilluminator which is included with the system. Select from a 302nm UV, single wavelength model, the 2UV (302/365nm) or 3UV model (254/302/365nm).

Additional gels stained with other fluorophores may be viewed by adding optional White or Visi-Blue™ Light Plates. Plate sizes are 21 x 26cm or 25 x 26cm. See page 4 for ordering information.



White Light Plate for viewing as Coomassie® blue, Silver stain or other gels



Visi-Blue™ Plate for viewing GelGreen™, GelRed™, SYBR® Green and other gels requiring 460-470nm blue light; an amber emission filter is included

Ordering Information

Model Name	100-115V	230V	UV Transilluminator Included
BioDoc-It ²	97-0760-01	97-0760-02	M-20V (20 x 20cm, 302nm)
BioDoc-It ²	97-0761-01	97-0761-02	LM-20 (20 x 20cm, 302/365nm)
BioDoc-It ²	97-0762-01	97-0762-02	M-26V (21 x 26cm, 302nm)
BioDoc-It ²	97-0763-01	97-0763-02	LM-26 (21 x 26cm, 302/365nm)
BioDoc-It ²	97-0764-01	97-0764-02	LMS-20 (20 x 20cm, 254/302/365nm)
BioDoc-It ²	97-0765-01	97-0765-02	LMS-26 (21 x 26cm 254/302/365nm)
BioDoc-It ²	97-0766-01	97-0766-02	M-26XV (25 x 26cm, 302nm)

BioDoc-It² systems include: Camera, lens, darkroom with built-in tablet/touch screen, USB stick, Ethidium Bromide filter, choice of transilluminator

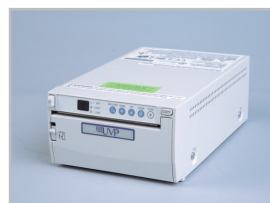
Specifications

System	
Camera/Lens:	GelCam 315, 5.0 MP, with 8-48mm, f/1.2 manual zoom lens
Tablet/Touchscreen:	Tablet with Windows 10 10" color touchscreen with stylus pen
Software:	Exclusive image capture functions
Darkroom:	Wide front door with UV safety switch Gel viewer window Epi white light Side access doors Two-position emission filter tray
Emission Filter:	Ethidium Bromide
Transilluminator:	Filter sizes: 20 x 20cm, 21 x 26cm or 25 x 26cm; Wavelength: 1UV 302nm, 2UV 302/365nm or 3UV 254/302/365nm
Power:	100-115V/60Hz or 230V/50Hz
Network:	Wireless connectivity Ethernet compatible (order 10/100 Ethernet to USB cable: 89-0380-01)
Dimensions:	32.5H x 15.5W x 13.25D in. (825 x 394 x 337mm)

Accessories

Ordering Information

White Light Plate 21 x 26cm 25 x 26cm	38-0191-01 38-0191-04
Visi-Blue Plate 21 x 26cm 25 x 26cm	38-0200-01 38-0200-04
GelTray Protects transilluminator surface from scratches; 27 x 23 cm	85-0007-05
Gel-Ruler Fluorescent cm markings; 25 cm	85-0003-01
Digital Thermal Printer Mitsubishi	89-0069-06 (115V) 89-0069-07 (230V)
Digital Thermal Printer Sony (for Europe)	89-0357-01 (230V)
Thermal Paper, Mitsubishi High density, 4 rolls (800 prints)	89-0038-01
Thermal Paper, Sony super glossy UPP110HG 5 rolls (1000 prints)	89-0174-01
Thermal Paper, Sony glossy UPP110HA 5 Rolls (1000 prints)	89-0031-01



An Analytik Jena Company

Web Site: UVP.com

UVP, LLC 2066 W. 11th St., Upland, CA 91786

Tel: (800) 452-6788 | (909) 946-3197

Fax: (909) 946-3597 | **Email:** info@uvp.com

Ultra-Violet Products Ltd. Unit 1, Trinity Hall Farm Estate,
Nuffield Road, Cambridge CB4 1TG UK | **Tel:** +44(0)1223-420022

Fax: +44(0)1223-420561 **Email:** uvp@uvp.co.uk

For information contact:

twitter.com/uvpbioimaging

