



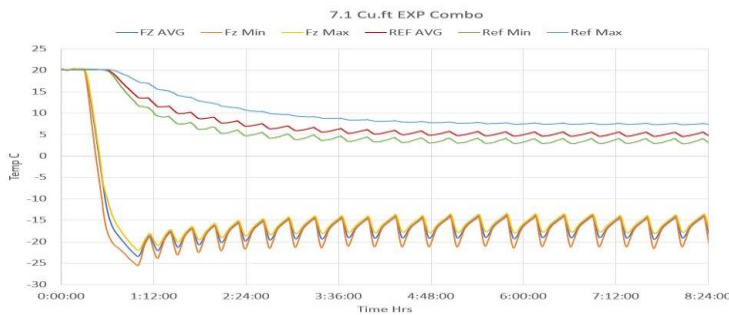
## Technical Data Sheet

### Thermo Scientific 7.1 Cuft Explosion Proof Combo

Revision-1

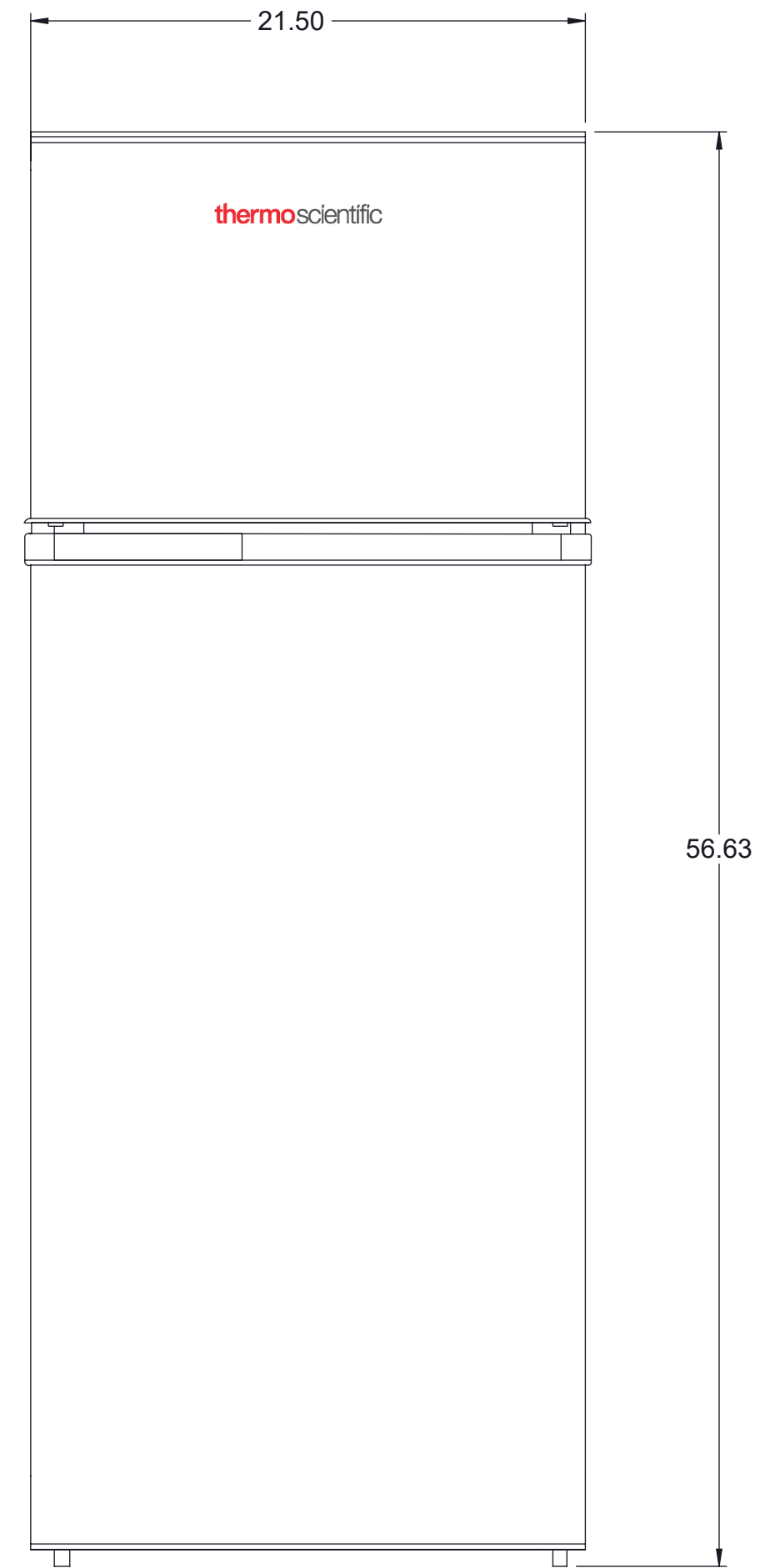
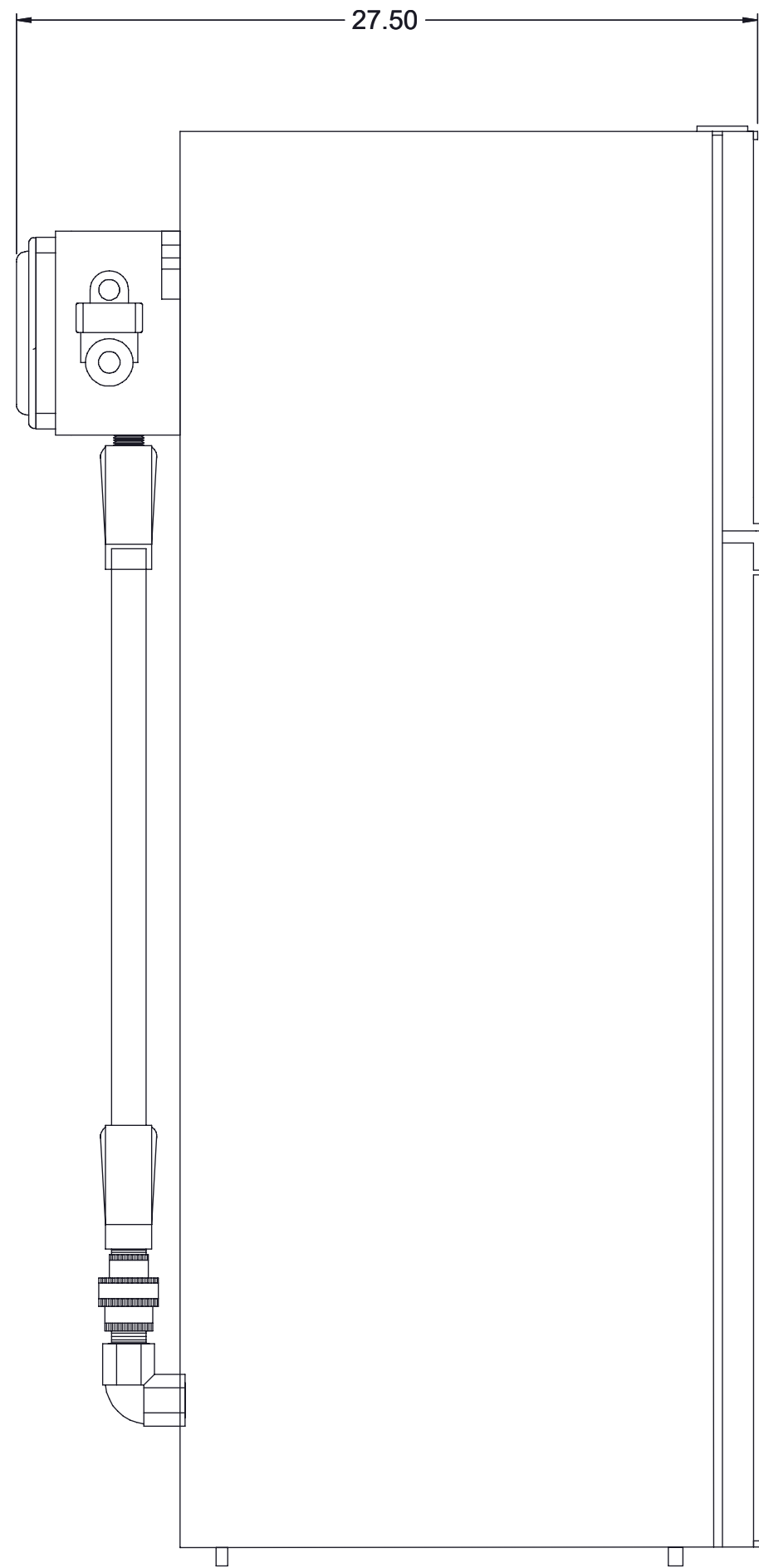
Thermo Fisher Scientific, Asheville, North Carolina

Specifications	Catalog Number
	TSH07CESA
Production Model Number	TSH07CESA
Application, Rating And Electrical Data	
Application	7.1 Cuft Explosion Proof Combo
Storage Volume	7.1 Cuft/201 Liters
Temperature Rating	Ref: 1°C to 12°C; Frz: -20°C to -12°C
Electrical Power	115 V / 60 Hz
Instrument Rated Current	1A
Building Supply Rating	115v± 10%Volt
Power Plug	Not Provided
Agency Listings	cULus
Sound Pressure Level	35.3dBA
Indoor/Outdoor Usage	Indoor Use Only
Application Environment	Class I, Group C and D Environment
Ambient Operating Temperature	15° C - 32° C (60° F - 90° F)
Refrigeration Configuration	
Refrigeration System	Vapor Compression System
Compressor / Number	Hermetic Compressor/1
Condenser Type/Number	Foamed in / 1
Expansion Device	Capillary Tube
Evaporator Type	Foamed in Evaporator
Defrost Method	Ref: Automatic Defrost; Frzr: Manual Defrost
Refrigerant Charge/Flammability	R600a/Flammable
Controller/Electrical System Configuration And Features	
Power Switch	Not Present
Controller Type	Mechanical Dial Thermostat
Setpoint Security / Programmable	No
Compressor Safe Guard	High Temp Cutout Switch / Overload Protector
Control Sensor	Capillary tube
Remote Alarm Terminals	Not Present
Power Failure Alarm	Not Present
Data Logger / Chart Recorder	Not Present
Dimensions And Construction	
Interior Dimensions (H x W x D)	Ref: 36.5" x 17.5" x 17" (92.7 x 44.5 x 43.2 cm) Frz: 10.38" x 15.5" x 16" (26.4 x 39.4 x 40.6 cm)
Exterior Dimensions (H x W x D)	56.63" x 21.5" x 27.5" (143.8 x 54.6 x 69.8 cm)
Insulation	Cyclopentane
Door Perimeter heater	No
Shelves / Capacity	Ref: (3) Adjustable Shelves,(1) Drawer, (3) Door Shelves Fz: (1) Shelf
All-Direction Casters	(2) Adjustable Feet In Front
Net Weight	101 lbs/ 45.8 kg
Access Port / Dia	No
Typical Performance Characteristics	



Test unit MSO number	20029-B-3-2
Cabinet Load	Unloaded
Average Cabinet Temp at 20c ambient at default setting (Ref)	4.98/-16.17
Peak Variation (Ref/Fz) (C)	4.94/8.39
Uniformity (Ref/Fz) (C)	4.12/1.59
Stability (Ref/Fz) (C)	1.15/6
1-min Door Opening Recovery time (Ref/Fz) (min)	6/6
Duty Cycle (%)	23%
Cycle (On/Off)rate at default setting (min)	5/17
Energy Consumption (kW-hr/day)	0.37
Pull Down Time 20c to 5C/-20C (Min)	165/32
Warm Up time 5C/-20C to 15C/0C (min)	228/111

- 1) Performance is nominal and individual units may vary.
  - 2) Unit performance will differ due to product amount, product size and operating conditions.
  - 3) Continuous product enhancements may, without notice, result in amendments or omissions to this specification. Thermo Scientific cannot accept responsibility for damage, injury, loss or expenses resulting from misapplication of the information herein.
- \* Unit can be warmed as per individual user requirement using manual controls inside the cabinet



DO NOT USE FOR ENGINEERING PURPOSES. SUBJECT TO  
CHANGE WITHOUT NOTICE

**thermo**scientific

7.1 Cu.Ft. EXPLOSION PROOF REFRIGERATOR/FREEZER