



Helmer Scientific, Noblesville, Indiana  
www.helmerinc.com

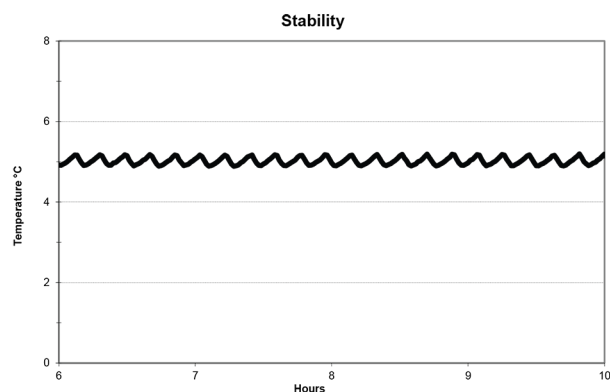
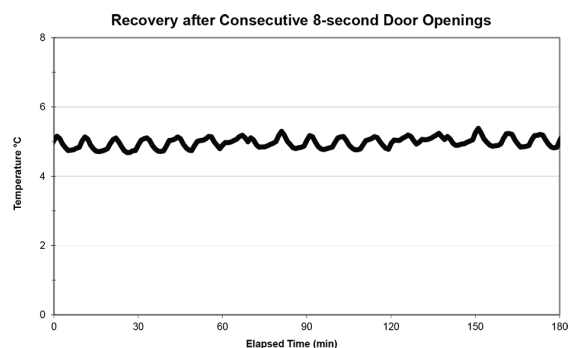
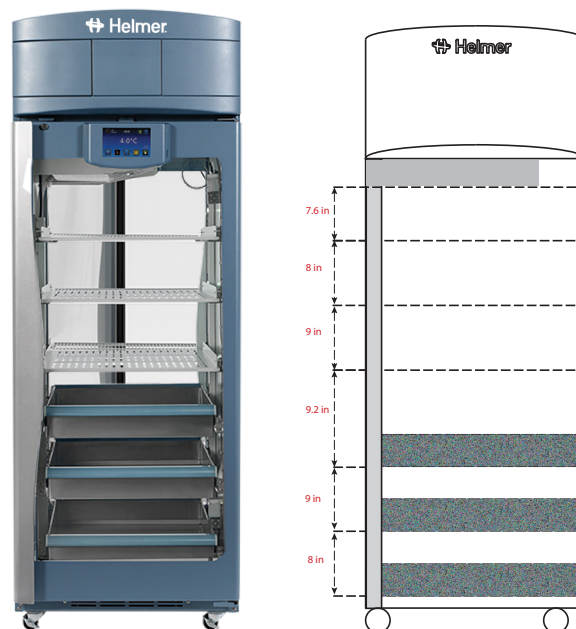
## Technical Data Sheet

### High-Performance, Medical-grade Refrigerator

Model: iPR226-GX, i.Series® Pharmacy / Pass-Thru

Application, Rating, & Electrical Data	
Application	High performance storage of medical and scientific products
Storage Volume	26.4 cu ft (747 L)
Temperature Range	+2°C to +10°C
Set Point	+5°C
Electrical Power	115V 60Hz
Maximum Current	4.6 A
Facility Supply Rating	Branch circuit with earth ground, meeting plug/cord ratings as well as local electrical safety codes and requirements 110-120V AC: 15 A (minimum) 220-240V AC: 10 A (minimum)
Power Plug/Power Cord Length	NEMA 5-15 hospital-grade   115V 60Hz, 8 to 10 ft (2.4-3.0m) Inquire about additional plug/cord options
Certification/Agency Listing	QPS (Certified to UL and CSA Standards) IEC/UL61010-2-01: 2016   IEC 61010-1:2010, AMD1:2016 (pending)
Indoor/Outdoor Use	Indoor use only, non-residential
Application Environment	Non-corrosive, non-flammable, non-explosive
Ambient Operating Temperature	+15°C to +32°C   +59°F to +90°F
Refrigeration	
Refrigeration System	VCC compressor-based, forced-air hydrocarbon
Compressor	Hermetic, variable speed (VCC). Rated speed range: 2000-3500 rpm
Condenser Type	Air-cooled fin and tube, sealed
Expansion Device	Cap tube
Evaporator Type	Direct expansion with forced-air fin and tube
Defrost Method	Automatic
Refrigerant	R290, Propane, EU F-Gas and EPA SNAP compliant
Controller / Configuration Settings	
User Interface	i.C <sup>3</sup> ® color touchscreen, door mounted, 7in   177mm, °C or °F
Power Switch	On/Off
Controller Type	Microprocessor with touchscreen input & display
Security	Lockable door, key lock (key switch override for optional interlock)
Control Sensor	RTD, stainless steel
Communication Ports	USB, Remote alarm contacts, RJ45 (Ethernet). API available for Ethernet connectivity development
Power Failure Alarm	Yes
High/Low Alarms - Tests	Yes, fully adjustable, automatic (Peltier) testing
Door Ajar Alarm	Yes, fully adjustable
Condenser Temperature Alarm	Yes, fully adjustable
Min/Max Temperature	Yes, display and reset
Download	Yes, via USB. CSV and PDF
Event Log	Yes, all alarms, door openings, download via USB
Temperature Log	Yes, download via USB
Interactive Temperature Graph	Yes
Temperature Monitoring Ballast	Yes, two 4 oz bottles with screw caps, solid ballasts optional
Battery Back-up	Yes, 20 hr display & alarm, 2.5 hrs with optional interlock system back-up for i.C <sup>3</sup> ® touchscreen   Rechargeable 12V, lead acid
Performance Characteristics*	
Uniformity   °C	+/-1.0
Recovery to 8°C after 3 min door opening   min	8
Stability   °C	1.7
Energy Consumption   kWh/day	4.89
Noise emission   dB	56
Heat Rejection / Emission   BTU/hr	1441
Pull-down time to 5°C   min	28

\*All performance data from 26 cu ft refrigerator, 25°C ambient, 5.0°C

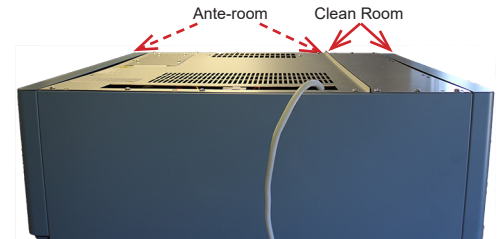


### Dimensions and Construction

Interior (w x h x d)	24.7 x 58.1 x 31.8 in   628 x 1476 x 809 mm
Exterior (w x h x d)	29 x 79.6 x 35.8 in   737 x 2021 x 1014 mm
Overall Exterior (w x h x d)	29.9 x 79.6 x 40.9 in   759 x 2021 x 1038 mm * includes door handles
Insulation	Sustainable, US EPA, and SNAP approved foam
Exterior/Interior Finish	Bacteria-resistant powder-coating
Trim/Skirt Kit Details (sold separately)	Trim kit - side rails 3 x 81.8 in   77 x 2078 mm; top rail 3 x 35 in   77 x 889 mm; Bacteria-resistant powder-coating; 1 kit per side needed Skirt kit - 2.7 x 29 in   67 x 736 mm; Clean room side only; Bacteria-resistant powder-coating
Door	2, dual-pane glass, right-hinge
Access Port	Top Access Port- for external monitoring probe(s) (0.75 in   19 mm diameter) Left Sidewall Port - with interior and exterior plugs (1.75 in   45 mm diameter)
Interior Storage (w x h x d)	3 ventilated, powder coated, shelves, adjustable 22.4 x 27.5 in   569 x 700 mm, 100 lb   46 kg max capacity/shelf 3 liquid-tight, stainless steel, 2-way drawers, adjustable 21.5 x 4.1 x 26.9 in   547 x 104 x 683 mm, 100 lb   46 kg max capacity/drawer
Casters	Yes, swivel-locking
Interlock Door	Optional - electronically-controlled with key switch override (prohibits doors on both sides from being opened simultaneously)
Net Weight	526 lb   239 kg
Shipping Weight	605 lb   275 kg
Clearance Requirements	Minimum of 8" (203mm) above the ante-room (control) side of the refrigerator. Clearance above the solid cover on the clean room side may be 0".
Options   Accessories	Interlock Door - Electronically Controlled, Chart Recorder, Chart Paper, Skirt Kit, Wall Trim Kit, Ventilated Shelves, Liquid-tight Drawers, Storage Tray Package, Drawer Dividers, Solid Ballast, Left-hinge Door, Solid Door, Remote Alarms, Floor Bracket Kit, Stainless Steel Interior, Screen protector, USB Flash Drive, Side Wall Access Ports, Temperature Validation, Certificate of Calibration, Validation guide (IQ/OQ), Extended Warranty
Warranty	Rel.i™ Plus Warranty - 7 years compressor, 2 years parts, 1 year labor Outside US and Canada - Contact your distributor for warranty information

### Pass-Thru Placement for Building-in

When placing a pass-thru refrigerator between two rooms, size the opening to fit the width of the cabinet. From front to back, the flange between the top covers indicates the separation between the clean room and ante-room (control) sides. The refrigerator should be positioned so the wall header is over the solid cover, but not over the flange or blue bezel. A minimum overhead clearance of 8" (204mm) is required on the ante-room side of the cabinet. Zero clearance is required above the clean room side as well as at the left and right sides of the cabinet.

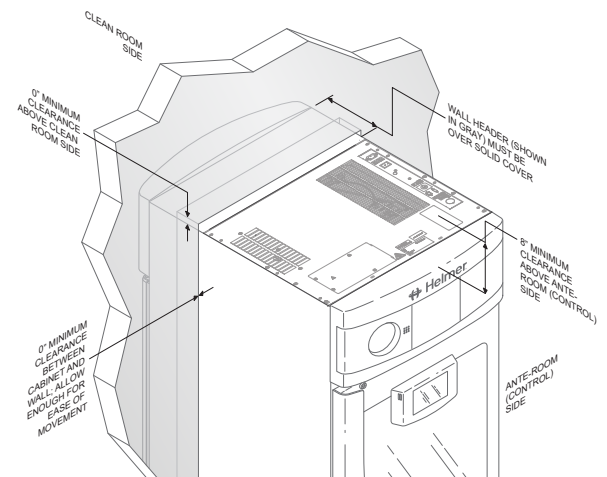


### NOTICE

If adding Trim and/or Skirt kit(s) to the unit(s), kit dimensions must be considered prior to building-in.

### Wall Header Placement and Required Clearances

Shown from ante-room (control) side. Appearance may vary.



### Optional Trim Kit and Skirt Kit Placement

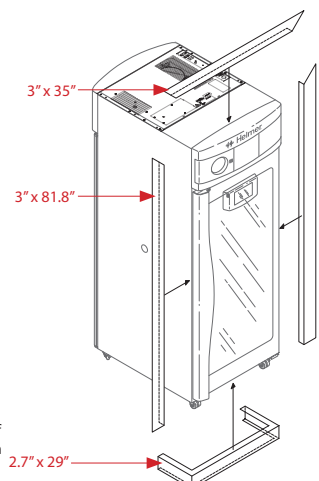
Shown from clean room side. Appearance may vary.

#### Trim Kit

Attaches to the wall around cabinet. Top piece extends across full width of unit; may be installed on the clean room or ante-room side.

#### Skirt Kit

Attaches to the underside of cabinet. Front piece extends across full width of unit; may only be installed on the clean room side.



Helmer Scientific 380483/A 08/22

