

Spend more time on your research...
AutoMATE your pipetting.

Intuitive
programming
and control

Process 96 or
384 well
plates

Automated tip
loading &
ejecting



Fill 96-well plates
in **seconds**



Eliminate hand
strain injury

- *Fast and accurate 96-channel pipetting*
- *Accepts 96/384 well microplates, PCR plates and reservoirs*
- *Touch-screen tablet for programming & operation*
- *4-position motorized platform*
- *Exchangeable pipette heads (1-20 μ L, 5-200 μ L, 100-1000 μ L)*

The **AutoMATE™ 96** from Accuris Instruments is a fully automated, high throughput liquid handling work-station that improves productivity when filling microplates. Capable of dispensing up to 96 channels simultaneously, the *AutoMATE 96* significantly reduces the processing time and errors associated with manual pipetting.

The included tablet features an intuitive app for programming and operation. Unlike many 96-well pipetting stations, the *AutoMATE 96* is “hands-free”, with motorized tip loading/ejection and a four position, automated, sliding platform that precisely aligns the tips with the appropriate microplate/reservoir. Once programmed, the instrument is capable of running protocols to completion without any user input.

Three interchangeable heads allow for a pipetting range from 1.0µL to 1000µL. The *AutoMATE 96* is compact enough to fit onto a standard lab bench or into a biosafety cabinet.

Pipetting Modes:

Standard Pipetting:

Aspirating and dispensing reagents by hand is labor-intensive and error prone. With the *AutoMATE 96*, reagents can be aspirated and dispensed automatically, ensuring accurate and precise transfer to and from microplates or reservoirs.

Multi-Dispensing (Repeat Pipetting):

Filling multiple microplates manually is a time consuming process that can lead to hand fatigue and repetitive stress injuries. The Multi-dispensing function automates the filling process and accomplishes the task quickly without introducing hand strain or fatigue.

Secondary-Dispensing (Plate Filling):

Many protocols and applications call for filling a plate with multiple samples or reagents. With the *AutoMATE 96*, multiple reagents can be aspirated and dispensed into the same microplate. For improved results, each dispense can be programmed to include a mixing step.

Serial Dilutions:

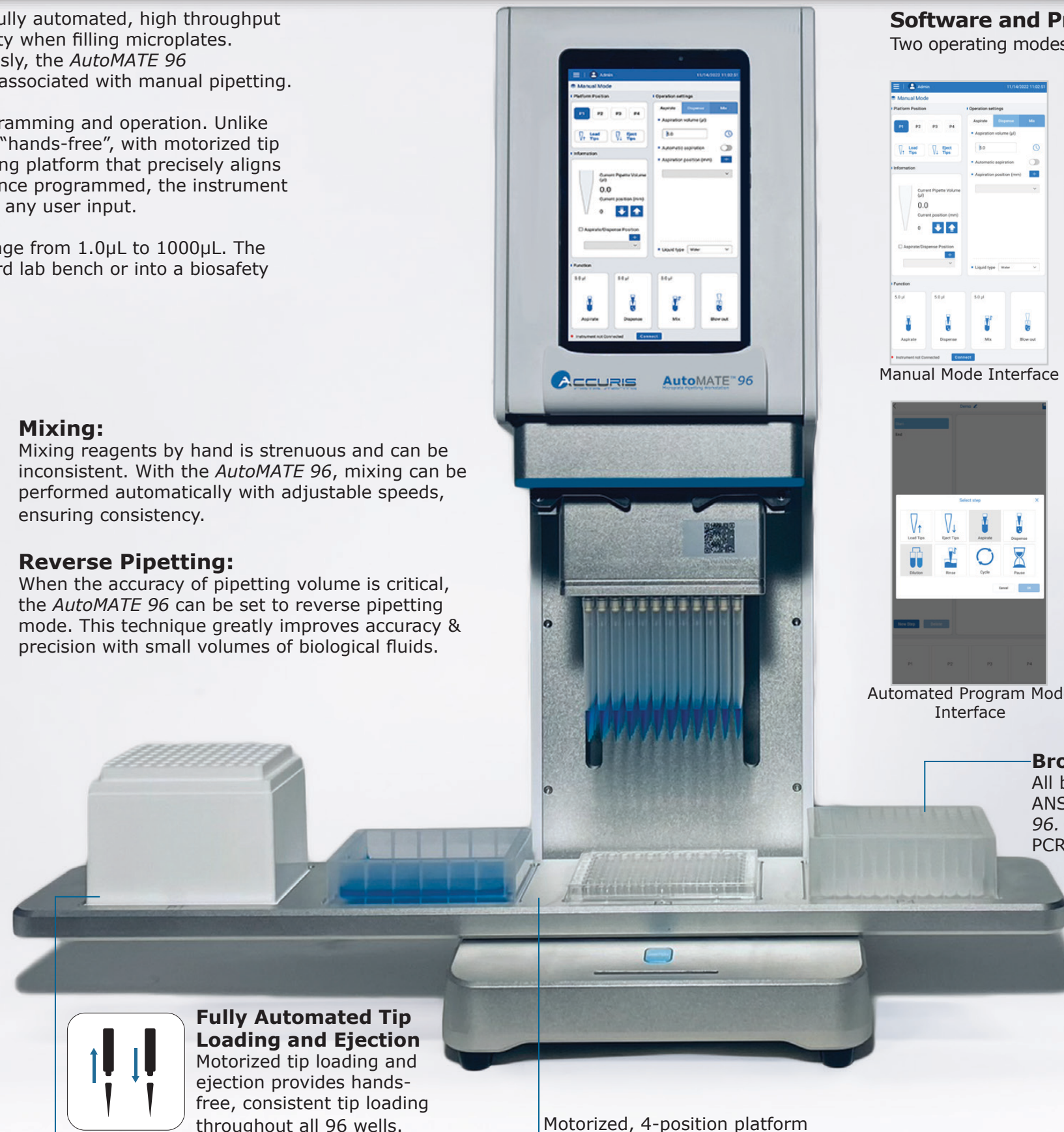
Performing serial dilutions via manual methods is labor-intensive and error prone. Errors in this process will amplify subsequent dilutions as the process continues. With the *AutoMATE 96*, serial dilutions can be performed automatically and error free.

Mixing:

Mixing reagents by hand is strenuous and can be inconsistent. With the *AutoMATE 96*, mixing can be performed automatically with adjustable speeds, ensuring consistency.

Reverse Pipetting:

When the accuracy of pipetting volume is critical, the *AutoMATE 96* can be set to reverse pipetting mode. This technique greatly improves accuracy & precision with small volumes of biological fluids.



Software and Programming

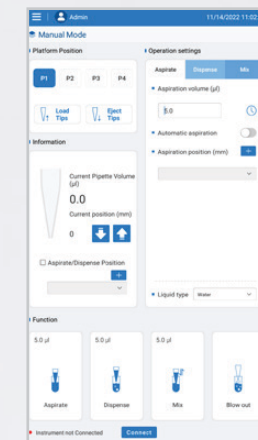
Two operating modes are available and can be selected per the user's preference.

Manual Mode:

Perform operations quickly & efficiently simply by selecting each function individually.

Manual functions:

- Load tips
- Eject tips
- Aspirate reagents
- Dispense reagents
- Mix reagents
- Blow out reagents



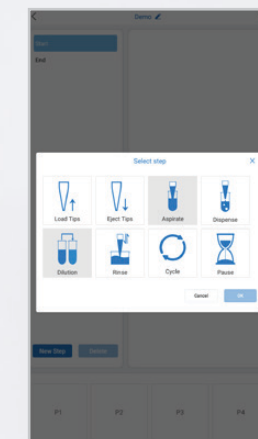
Manual Mode Interface

Automated Program Mode:

Create a protocol made up of multiple steps in succession. This interface allows for complex protocols to be run from tip-loading through completion with the touch of a button.

Programmable steps:

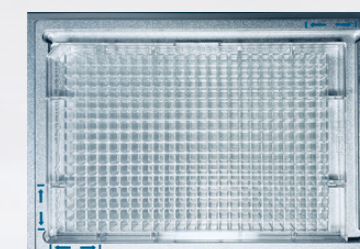
- Load/Eject Tips
- Aspirate/Dispense reagents
- Perform serial dilutions
- Rinse tips
- Repeat a cycle
- Pause after a certain step



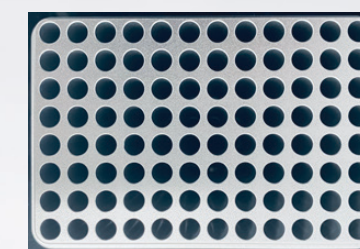
Automated Program Mode Interface

Broad Labware Compatibility

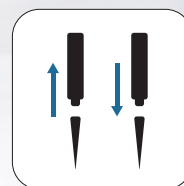
All brands of microplates and reservoirs meeting SLAS/ANSI formats are compatible for use with the *AutoMATE 96*. Included plate adapters allow 384 well microplates and PCR plates to be used.



384 Well Microplate Adapter



PCR Plate Adapter



Fully Automated Tip Loading and Ejection

Motorized tip loading and ejection provides hands-free, consistent tip loading throughout all 96 wells.

Motorized, 4-position platform

AutoMATE™ 96 Specifications

| | |
|--------------------------|---|
| Display | 8-inch color touch screen tablet (included) |
| Aspirate/Dispense volume | 1-1000µL (depending on pipetting head) |
| Platform capacity | 4 (tip racks/plates/reservoirs) |
| Channels | 96 individual pistons |
| Pipetting technology | Air displacement |
| Compatible plate formats | 96/384 well microplates, shallow/deep well plates, PCR plates |
| Communication ports | USB ports for importing/exporting |
| Voltage input | 100-240 V, 50-60 Hz |
| Power | 100W |
| Weight | 32.6 kg / 71.8 lbs |
| Dimensions (WxDxH) | 69.0 x 35.0 x 67.3 cm / 27.2 x 13.8 x 26.5 in. |



Easy Replacement of Pipetting Head

Pipetting Head Specifications

| | MP9600-20PH (1-20µL) | MP9600-200PH (5-200µL) | MP9600-1000PH (100-1000µL) |
|-----------|-------------------------|---------------------------|-------------------------------|
| Accuracy | ≤±12 % at 1µL | ≤±5 % at 5µL | ≤±2.5 % at 100µL |
| | ≤±5 % at 2 µL | ≤±2 % at 20µL | ≤±0.4 % at 500µL |
| | ≤±1 % at 10µL | ≤±1 % at 100µL | ≤±1 % at 1000µL |
| | ≤±1 % at 20µL | ≤±1 % at 200µL | |
| Precision | ≤10 % at 1µL | ≤3.5 % at 5µL | ≤1.25 % at 100µL |
| | ≤5 % at 2µL | ≤1.5 % at 20µL | ≤0.4 % at 500 µL |
| | ≤1 % at 10µL | ≤0.8 % at 100µL | ≤0.4 % at 1000µL |
| | ≤0.8 % at 20µL | ≤0.4 % at 200µL | |

Applications

- PCR/qPCR setup in PCR plates
- Cell culture prep, media change
- Reagent addition
- Replication of microplates
- 384 well plate set up (special adapter included)
- Preparation of cell-based assays
- ELISA preparation (plate coating, washing, aspirating, master mix preparation)

Ordering Information

| Cat No. | Description |
|-----------------|---|
| MP9604* | AutoMATE™ 96 Microplate Pipetting Workstation (pipetting head not included), 115V |
| MP9600-20PH | Pipetting Head, 1-20µL |
| MP9600-200PH | Pipetting Head, 5-200µL |
| MP9600-1000PH | Pipetting Head, 100-1000µL |
| MP96-T20-LR | AutoMATE™ Pipette tips, racked 96 well, 20µL Low Retention, 24/cs |
| MP96-T20-LRFS | AutoMATE™ STERILE Pipette tips, racked 96 well, 20µL Filtered, Low Retention, 24/cs |
| MP96-T200-LR | AutoMATE™ Pipette tips, racked 96 well, 200µL Low Retention, 24/cs |
| MP96-T200-LRFS | AutoMATE™ STERILE Pipette tips, racked 96 well, 200µL Filtered, Low Retention, 24/cs |
| MP96-T1000-LR | AutoMATE™ Pipette tips, racked 96 well, 1000µL Low Retention, 16/cs |
| MP96-T1000-LRFS | AutoMATE™ STERILE Pipette tips, racked 96 well, 1000µL Filtered, Low Retention, 16/cs |
| MP96-RSV | AutoMATE™ Reagent reservoir, 195mL, pack of 1 |

* Includes US plug. For EU plug, please add "-E".