

FREE

Equipment

with purchase of item below*
(Free with items: BT4001, PR2000-N-1000, B2000-4, B5200, PR1001, and C2000)



Value: \$441

Tube Rotator
Accepts tubes 1.5 to 50ml



Value: \$448

Includes: COMBI-Rotor
holds 12 x 1.5/2.0ml and
4 x PCR Strips



Value: \$472

3D Rocker

Your choice of:

Roto-Mini™
Item: R2020

MyFuge™ 12
Item: C1012

MiniMixer™
Item: B3D1020



ORBi-SHAKER™ CO₂
All Environment Shaker

- Designed to fit and maximize capacity in most CO₂ incubators & chambers
- Adjust shaker settings without disturbing the CO₂ environment
- Instantly exchange flask clamps with MAGIC Clamp Accessories
- All delicate electronics located in the remote controller, protected from harsh environments

BT4001 Orbi-Shaker CO₂ with remote controller & rubber mat platform \$3,879
BT3000-MR MAGIC Clamp™ universal platform for flasks & tube racks \$312



SUREAIR™
PCR WORKSTATION WITH UV AND HEPA FILTRATION

- Included HEPA filter provides clean air to ISO-5 conditions
- Germicidal UVC light eliminates potential contaminants
- Compact, 22 x 16 inch footprint fits on any benchtop or cart
- Increased confidence in PCR results and other experimental data

B5200 SureAir PCR Workstation with HEPA and UV \$2,235

accuris-usa.com



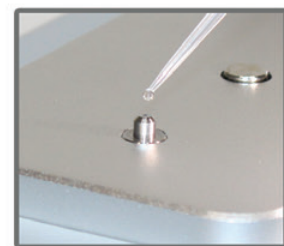
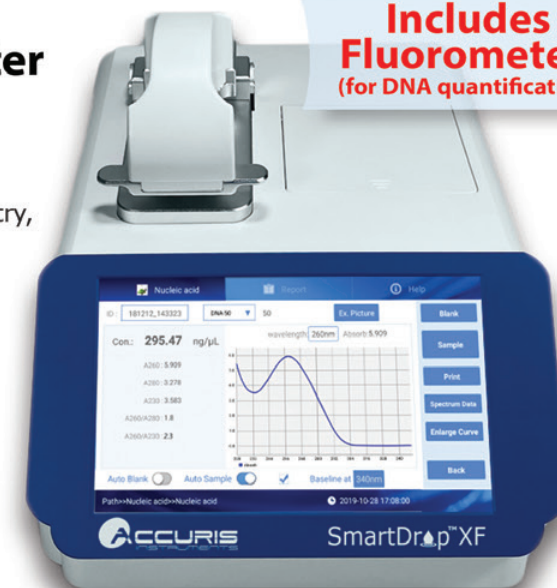
On TARGET 2023 Promotions

Vol. 1-2023
special offers valid
through Oct. 31, 2023

SmartDrop™ XF Nano Spectrophotometer

- Quick and accurate results from a sample droplet (0.5µl - 2.0µl)
- 7.0-inch color touch screen for operation (no PC software required)
- Multifunctional software for Nucleic Acids, Protein A280, Colorimetry, Fluorometry, UV-Vis, & OD600 measurements
- Built-in printer and cuvette port for OD600 readings
- Additional models available (SmartDrop™ L & SmartDrop™ X)

Includes Fluorometer!
(for DNA quantification)



Requires one small droplet



Integrated Printer



Cuvette port for OD600 Readings

SmartDrop™ Series Nano Spectrophotometers

NS1000	SmartDrop™ L (260, 280, 600nm)	\$6,090
NS1010	SmartDrop™ X (200-800nm)	\$11,539 \$9,939
NS1020	SmartDrop™ XF (200-800nm) with Fluorescence detection	\$12,639 \$11,839



NS1010: SAVE \$1,600! Sale Price \$9,939

NS1020: SAVE \$1,800! Sale Price \$11,839

Use promo code: OT1.23

Special Offer
Save \$200



qMAX™ Green qPCR Mix
with Blue Tracking Dye

- Superior sensitivity and fast cycling with exceptional results
- Early Ct values and detection across a broad dynamic range
- Includes Accuris Hot Start Taq Polymerase for greater specificity and accuracy
- Inert, blue tracking dye assists with accurate pipetting



Contact us for bulk pricing!



Taq PCR Master Mix

- Ideal for routine PCR applications, as well as genotyping, colony PCR, and fast PCR
- Improved template affinity and solubility for higher enzyme activity and greater yields
- Proprietary buffer optimized for a variety of assay conditions
- Convenient 2X Master Mix with or without red loading dye



PR1001-1000 2X Taq Master Mix 1000 x 50µl Reactions \$365
PR1001-R-1000 2X Taq Red Dye Master Mix 1000 x 50µl Reactions \$365



myBATH™ 4L
The complete personal water bath

- Hinged lid is also removable
- Includes tube racks for 1.5/2.0ml, 15 and 50ml tubes
- Quick-Cal™, in-lab user calibration function
- Digital accuracy and convenience



B2000-4 MyBath 4L Digital Water Bath \$1063
B2000-4-T5 Optional tube rack for 40 x 0.5ml tubes \$101



PLATEFUGE™
MICROPLATE MICROCENTRIFUGE

- Quickly spins down droplets in PCR plates
- Unique rotor design prevents sample spillage
- 50% smaller than traditional centrifuges
- Accepts all popular PCR plates (skirted, semi & non) & most microtiter plates



C2000 PlateFuge™ MicroCentrifuge with rotor & plate carriers \$877
C2000-A02 Tube adapter, holds 96 x 0.2ml tubes or 8 x 12 position PCR strips, 2pk \$65
C2000-DWMP Optional rotor with carriers for deep well plates (speed: 1500 rpm) \$224

Accuris DNA Quantification Kits

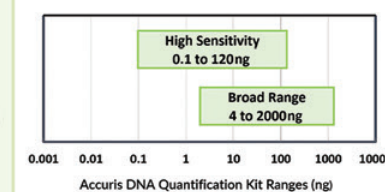
For accurate fluorescent quantification of dsDNA using instruments such as the Qubit®, SmartDrop™ XF & microplate readers

High Sensitivity dsDNA Kit

- Accurate for quantifying low concentration dsDNA samples.
- Used with DNA sample concentrations of 0.005–120ng/µl
- Detection range of 0.1–120ng

Broad Range dsDNA Assay Kit

- Accurate for broad concentration range starting at 0.2ng/µl
- Used with initial DNA sample concentrations of 0.2 to 2,000ng/µl
- Detection range of 4–2,000ng



NS1020-HS-100 High Sensitivity DNA Quantification Kit, 100 assays \$131.30
NS1020-BR-100 Broad Range DNA Quantification Kit, 100 assays \$131.30

QüadCount™
Automated Cell Counter

- Reduce counting errors, save time and improve efficiency
- Intuitive software and touch-screen interface
- Convenient and cost-effective QuadSlides™
- Quick, Normal and Precise count modes (up to 3.6µl count volume)

E7500 QuadCount™ \$4,151
E7500-S1 QuadSlide™, 50/pk. \$156

Sale Price \$3,951



Replaces manual cell counting...ask for a demo today!



*Promo Code OT1.23 Valid Through 10.31.23. Pricing, availability, and specifications subject to change without notice.



SMARTREADER™ SERIES

- Intuitive, 7 inch, color touch screen control panel
- Operates as a stand alone system, with USB flash drive for data transfer
- Integrated, multi-speed plate shaker

SmartReader™ 96: Filter-based, wavelength range from 340-750nm (405, 450, 492, 630nm included)
SmartReader™ UV-Vis: Monochromator-based system with wavelength range from 200 to 1000nm (no filters required)

Now Available with UV

Your go-to instrument for ELISA and absorbance assays

MR9600	SmartReader 96 Microplate Absorbance Reader	\$6,534 \$4,995
MR9600-T	SmartReader 96 Microplate Absorbance Reader with Incubation	\$6,955
MR9610	SmartReader UV-Vis Microplate Absorbance Reader	\$14,694
MR9611	SmartReader UV-Vis Microplate Absorbance Reader w/ cuvette port	\$15,622
MR9610-SDP	SmartDrop Accessory plate (SmartReader UV-Vis model only)	\$3,144
MR9600-TP	SmartReader Thermal Printer	\$361

Ready to use out of the box, no PC required

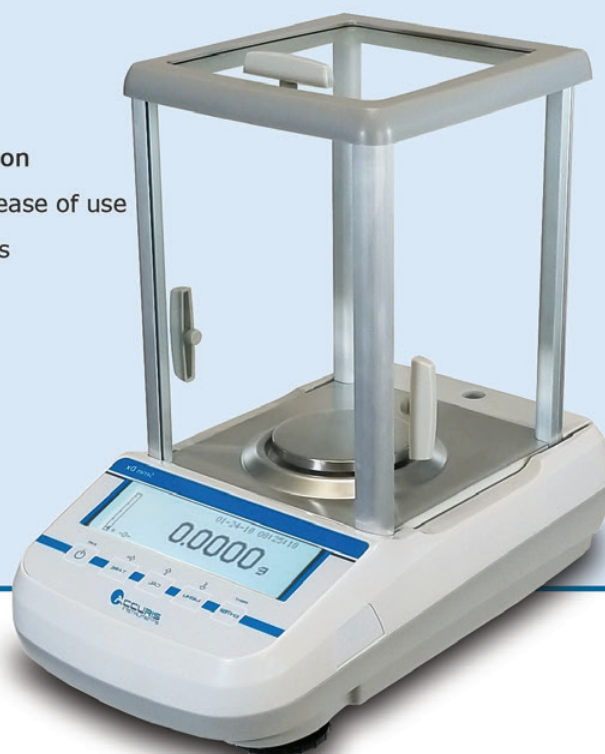


Accuris Dx Analytical Balances

- Upgraded Weighing Performance: Electromagnetic Force Restoration (EFR) technology, fast response and stabilization, and automatic internal calibration
- Refined Control Panels: Enhanced graphical interfaces significantly improve ease of use
- Space Saving: A careful redesign of our weigh cell assemblies has allowed us to pack more technology into a compact, 8 x 15 inch footprint
- Convenient Connectivity: Optional thermal printer or PC connection for result documentation

SERIES DX Graphical Display

W3101A-120	120g x 0.0001g	\$2,117
W3101A-220	220g x 0.0001g	\$2,461



Accuris Precision Balances

- Readability of 0.01g to 0.001g
- Easy in-lab calibration feature
- RS232 port for data output to a computer or printer

Precision Balances

W3200-120	120 x 0.001g	\$1,116
W3200-320	320g x 0.001g	\$1,196
W3200-500	500g x 0.001g	\$1,385

Compact Balances

W3300-120	120 x 0.01g	\$320
W3300-500	500g x 0.001g	\$374 Free!*
W3300-1200	1200g x 0.01g	\$415

With purchase of any W3200 series balance

Accuris Compact Balances

- Readability of 0.1g to 0.01g
- Easy in-lab calibration feature
- RS232 port for data output to a computer or printer



FREE!
Compact Balance

With purchase of any W3200 Balance

Use promo code: OT1.23



isoPURE™ 96

Automated Purification System

For DNA, RNA and protein

- Compatible with all popular magnetic bead kits
- Touch screen for on-board programming
- Process 96 samples in deep-well plates
- 8-position carousel with 2 heating blocks
- Sample volume 50µl – 1000µl

AP1096	IsoPure™ 96 Purification System	\$47,250
AP1016	IsoPure™ Mini Purification System	\$10,447

Compatible plates and tip combs available, visit www.accuris-usa.com for a complete listing



	IsoPure 96	IsoPure Mini
Capacity:	96 x 50µl to 1000µl	16 x 50µl to 1000µl
Plate Positions:	8 Plate Positions	1 Plate Position
Lysis Temp. Range:	Ambient +5° to 120°C	Ambient +5° to 120°C
Elution Temp. Range:	Ambient +5° to 120°C	Ambient +5° to 120°C
Mixing Speed:	Variable (10 mixing levels)	Variable (10 mixing levels)

Also Available isoPURE™ Mini

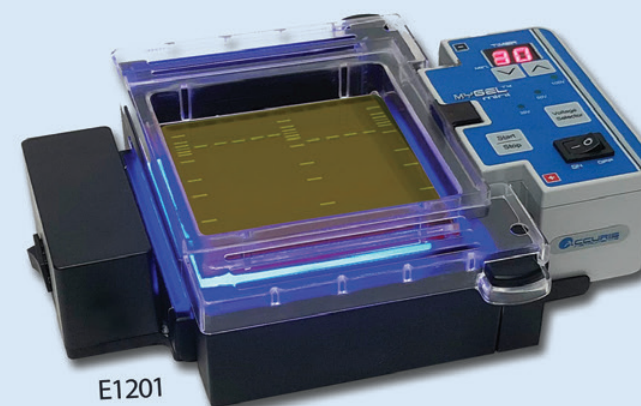
- Process up to 16 samples
- Compact, 8x10 in. footprint
- Programmable by PC or Android app



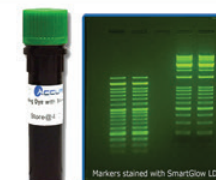
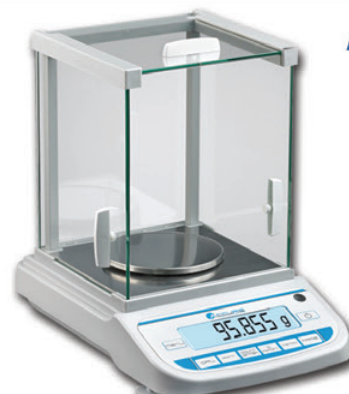
myGel™ InstaView™ Systems

- Quick and easy gel casting (no spacers or clamps required)
- Complete system to run, visualize and document mini gels
- View DNA migration and separation at any time during run
- Capture high resolution smart phone images without removing the gel from the tank

E1201	myGel™ Mini InstaView™ Electrophoresis System, complete with gel tank, power supply, E1200-CS1 casting set, blue LED transilluminator and imaging enclosure	\$1,001 \$900
E1200	InstaView™ Gel Tank, complete with tank, 10.5x10cm gel tray and casting set, 2 double sided combs (22+/12teeth), orange filter, blue LED transilluminator and imaging enclosure. Connect to any standard electrophoresis power supply.	\$767 \$667



Save \$100



SMART SAFE Nucleic Acid Stain GLOW

- Replaces hazardous EtBr
- Excitation by UV or blue light

Buy one Get one FREE!

E4500-LD	SmartGlow™ Loading Dye, 1.0ml	\$122
E4500-PS	SmartGlow™ Safe Green Pre-Stain, 1.0ml	\$122

Use promo code: OT1.23



ASPIRE™ LABORATORY ASPIRATOR

- Built-in vacuum pump
- Safe and precise aspiration
- Compact design
- Adjustable vacuum pressure

FREE!
8 Channel Adapter

V0020	ASPIRE™ Laboratory Aspirator	\$1,064
V1002-S8	Eight channel adapter	\$143 Free!*

Use promo code: OT1.23

With purchase of V0020 ASPIRE™

SMARTWASHER™ 96

Microplate Washer (for 96 well microplates)

- Quick set up and easy programming
- Compatible with U, V, C, and flat bottom 96 well plates
- Flexible programming for full plate, partial plate, or strip washing
- Choose 8-channel or 12-channel wash head
- Individually controlled wash and rinse cycles



MW9600*	SmartWasher™ 96 Microplate Washer for 96 Well Plates	\$5,009
MW9600-12CM	12-Channel Manifold	\$372
MW9600-8CM	8-Channel Manifold	\$337

*manifolds not included (Bottles included)