



Technical Data Sheet

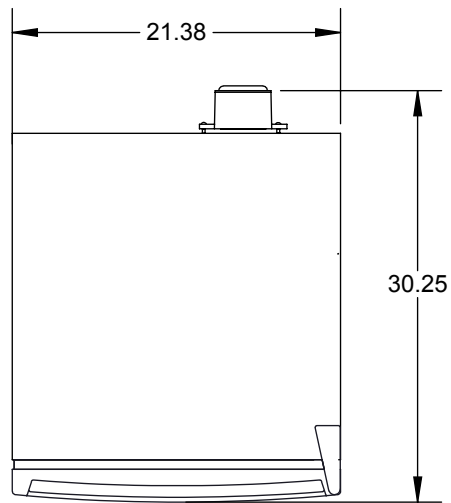
Thermo Scientific 5.0 Cuft Explosion Proof Freezer

Revision-1

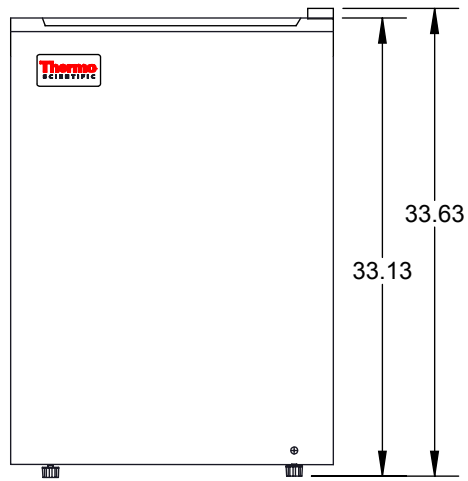
Thermo Fisher Scientific, Asheville, North Carolina

Specifications			
	Catalog Number		
	05EFEETSA		
	Production Model Number		
	05EFEETSA		
	Application, Rating And Electrical Data		
Application	5.0 Cuft Explosion Proof Freezer		
Storage Volume	5.0 Cuft / 141.5 Liters		
Temperature Rating	-12°C to -24°C		
Instrument Rated Current	1.1A		
Building Supply Rating	115VAC ±10% Of Normal Rated Line		
Power Plug/Power Cord Length	No Cord Supplied		
Agency Listings	cULus		
Indoor/Outdoor Usage	Indoor Use Only		
Application Environment	Non-Corrosive, Non-Flammable, Explosive, Good Air Ventilation		
Ambient Operating Temperature	15° C - 32° C (60° F - 90° F)		
	Refrigeration Configuration		
Refrigeration System	Vapour Compression System		
Compressor / Number	Hermetic Compressor/1		
Condenser Type/Number	Foamed In Condenser		
Expansion Device	Capillary Tube		
Evaporator Type	Shelf Evaporator		
Defrost Method	Manual Defrost		
Refrigerant Charge/Flammability	R134A		
	Controller/Electrical System Configuration And Features		
Controller Level	Chest Level		
Power Switch	Not Present		
Controller Type	Mechanical Thermostat		
Setpoint Security / Programmable	No/ Yes		
Compressor Safe Guard	High Temp Cutout Switch / Overload Protector		
Control Sensor	Capillary Tube		
Remote Alarm Terminals	Not Present		
Power Failure Alarm	Not Present		
Data Logger / Chart Recorder	Not Present		
	Dimensions And Construction		
Interior Dimensions (H x W x D)	29.5" X 18.63" X 19" (74.9 X 47.32 X 48.2 cm)		
Exterior Dimensions (H x W x D)	33.13" X 21.38" X 30.25" (84.15 X 54.3 X 64.5 cm)		
Insulation	Polyurethane Foam		
Door Perimeter heater	Not Present		
Shelves / Capacity	(2) Fixed Shelves, (1) Bottom Tray, (3) Door Shelves		
All-Direction Casters	(2) Adjustable Feet In Front, (2) Fixed Pads In Rear		
Ship Weight	95lbs / 43.1 kg		
Access Port / Dia	Not Present		
	Typical Performance Characteristics		
			Test Unit Series Number or MSO Number: 19446-AA-T1 Cabinet Load: Unloaded Average Cabinet Temp at -20C Cycle (C): -17 Peak Variation from Setpoint (C): +8.7 / -3.1 Uniformity (C): 1.8 Stability (C): 9.8 1-min Door Opening Recovery to -20C (min): 12 Duty Cycle at -20C (%): 33 Cycle (on/off) rate at -20C (min): 8 / 17 Energy Consumption (kw-hr/day): 0.9 Heat Rejection Rate (btu/hr): 125 Pull Down Time (to -20C) (min): 40 Warm Up Time (-20C to 0C) (min): 84
1) Performance is nominal and individual units may vary. 2) Freezer performance will differ due to product amount, product size and operating conditions. 3) Continuous product enhancements may, without notice, result in amendments or omissions to this specification. Thermo Scientific cannot accept responsibility for damage, injury, loss or expenses resulting from misapplication of the information herein.			

© 2016 Thermo Scientific. All trademarks are the property of Thermo Scientific and its subsidiaries. Specifications, terms and pricing are subject to change. Not all products are available in all countries. Please consult your local sales representative for details.



TOP VIEW



FRONT VIEW

DO NOT USE FOR ENGINEERING PURPOSES.
SUBJECT TO CHANGE WITHOUT NOTICE

Thermo
SCIENTIFIC

5.0 Cu.Ft. EXPLOSION PROOF FREEZER